



## Installation Instructions - Alumin-X™

Note to Dealers: If you install this product for the consumer, please provide him/her with this owner's manual after installation.

Thank you for purchasing the Profile Design Alumin-X™ aerobar. Please read these instructions thoroughly before attempting to install this item. Proper installation is required for compliance with Profile Design's warranty policy. If you are not familiar with the installation of aerobars, brakes, shifters or their accessories, please seek the assistance of your local Profile Design dealer by logging on to [www.profile-design.com](http://www.profile-design.com) and using "dealer search" or by calling Profile Design's customer service number.

### Tools and materials required: 4 & 5mm Allen wrench, Torque wrench

1. Do not grease the handlebar clamping area as this may cause the bar to slip while riding resulting in a loss of control.
2. Threaded areas have been pre-treated by Profile Design during production with a special blue thread locking compound. This special compound is easy to detect on the threads of all bolts provided. If you cannot detect this thread locking compound or if you have cleaned it off through normal maintenance, re-apply a suitable blue thread locking compound as available from Loctite® or another company before assembly.
3. For installation with a new stem, please follow the manufacturers instructions for the installation of those products.
4. The Alumin X is designed to work with stems that have a 31.8mm front clamp, do not use stems with any other front clamp diameters.
5. Remove your current handlebar, brake levers, shifters and handlebar tape. Prior to handlebar installation, please check the front stem clamp for any sharp edges or burrs. Remove these sharp edges and burrs with the sandpaper or file (as needed). Once the desired riding position is determined, evenly tighten front clamp bolts to stem manufacturer's installation instructions.
6. Slide the brake levers (or brake/shift levers) onto the handlebars and adjust them accordingly. If your brake lever requires internal cable routing, use hole provided in the bar. **⚠ WARNING** Do not drill additional holes in the bar as this may cause weakening of the aluminum material and void your warranty.
7. Slide the carbon extension tubes (#2 & 3) through the plastic clamp and into the rear brackets (#4 & 5) and adjust to the approximate desired length and rotational angle.
8. Secure the brackets & clamps (parts #4, 5 & 6) to the handlebar by inserting the M6x15 (#7) mushroom cap bolts through the brackets and clamps. Adjust to the desired width and, using a 5mm Allen wrench, evenly tighten these bolts to a torque of 60in.lbs (6.8Nm).
9. Adjust the extension tubes to the desired length and rotation and, using a 5mm Allen wrench, tighten the M6x15 mushroom cap bolts (#7) to a torque of 42-63in.lbs. (4.7-7.2 Nm). **⚠ WARNING** DO NOT OVER TIGHTEN CLAMPING BOLTS AS THIS MAY DAMAGE THE CARBON TUBE. Adjust the plastic clamp so that it is positioned underneath the front portion of the wing. Tighten the M4x20 button head bolt of the plastic clamp to a torque of 20 in-lbs (2.25Nm)
10. If you wish to install bar end shifters into the tip of the extensions (#2 & 3), slide control cable and housing through the hole provided in the tube. DO NOT DRILL OR CUT THE EXTENSION BAR. Tighten the mounting bolt until lever is firmly in place. **⚠ WARNING** DO NOT OVER TIGHTEN MOUNTING BOLT AS THIS MAY DAMAGE THE CARBON TUBE. Do not exceed 45in-lb (5Nm).
11. Attach the left and right adjustable arm bridges (#10 & 11) to the clamps (#6). Using the 5mm Allen wrench, tighten the M6x18 (#9) flat head bolts to a torque of 60in-lbs. (6.75Nm). To adjust the angle of the arm bridges, loosen the M6x16 flat head bolt, rotate the bracket to the desired angle, and re-tighten to a torque of 60in-lbs. (6.75Nms). Note that extreme angle adjustment will limit the ability of the F22™ arm troughs to align correctly.
12. The F-22™ arm trough width can be customized to suit your body type and riding style. To install, insert the 28mm long bolts (#16) through the arm trough washer (#12). Place the arm trough washer (#12) into the F-22™ arm trough (#13 & 14). Insert the bolts through the adaptor plate (#18) and through the holes of the riser post (#15) and thread into the arm bridges of the aerobar (#10 & 11). Choose the bolt holes of the arm bridge to adjust the width of the arm trough for comfort. Using a 5mm Allen wrench, tighten each bolt to the arm bridge with a torque of 30in.lbs. (3.4 Nm). Two bolts are required per side to prevent the arm troughs from spinning on the bridges. Repeat on second arm trough.
13. To achieve a lower riding position, remove the riser posts and use the shorter 16mm bolts (#17 not pictured) provided, in place of the 28mm flat head bolts. Tighten these bolts to a torque of 30in.lbs. (3.4 Nm).
14. Remove the Velcro backing from the F-22™ arm pads (#19 & 20) and apply to each of the F-22™ arm troughs. Apply each arm pad to the arm trough and hold firmly for 30 seconds to insure proper attachment.
15. Wrap bars as desired and install end plus as required.
16. Recheck the bolts for tightness after first usage and periodically thereafter to insure secure attachment of the aerobar.

### ⚠ WARNING

- Periodically, closely examine all surfaces of this Profile Design component (after cleaning) in bright sunlight to check for any small hairline cracks or fatigue at "stress points" (such as welds, seams, holes, points of contact with other parts etc.). If you see any cracks, no matter how small, stop using the part immediately and call Profile Design customer service. [AP0302-4-2]
- Whenever you install any new component on your bike make sure you thoroughly try it out close to home (with your helmet) where there are no obstacles or traffic. Make sure everything is working properly before going off on a ride or to a race. [AP1100-5-1]
- Racing (road, mountain or multi-sport) places extreme stress on bicycles and their components (like it does riders) and significantly shortens their usable life. If you participate in these types of events, the lifetime of the product may be significantly shortened depending upon the level and amount of racing. The "normal wear" of a component may differ greatly between competitive and non-competitive uses, which is why professional level riders often use new bikes and components each season as well as having their bikes service by professional mechanics. Particular care should be placed in the regular examination of your bicycle and it's components to insure your safety. [AP1100-6-1]
- A number of factors can reduce the life of this component to less than its warranty period. Rider size and/or strength, high mileage, rough terrain, abuse, improper installation, adverse weather conditions and crashes or accidents can all contribute to the shortening of the life of this component. The more factors that are met, the more the life of the component is reduced. [AP0801-7-2]
- Make sure you periodically recheck ALL aerobar bolts for tightness. Many of these bolts can loosen due to road vibration, which can cause possible breakage and loss of control. Make sure only the Profile Design supplied bolts are used. [AB1100-1-1]
- Aerobars can require riding positions that are new or different to many riders. It is advisable to practice using these bars in a low traffic area to become accustomed to any changes in the steering or handling characteristics of the bike. Please exercise caution when using these types of handlebars for the first time. Also make sure that you continue to look forward when riding and do not look down towards the ground. [AB1100-2-1]



## Installation Instructions - Alumin-X™

- If you ever crash and the handlebar, aerobar OR stem is damaged in any way, (slight bends or scrapes) ALL ADJOINING PARTS should be replaced as there may be undetectable damage to either part. Call Profile Design customer service and ask about our "Crash Replacement Policy". [AB1100-3-1]
- Whenever a bike equipped with an aero bar is placed on a roof rack, remove the armrest pads (if they are Velcro attached). Profile Design Warranty does not cover pads lost during transport. [AB101-6-1]

### Profile Design, LLC

#### Worldwide Limited Warranty

Profile Design LLC warrants to the original retail purchaser ("you") that the Profile Design product for which they received this warranty is free from defects in material and workmanship for two years from the date of original retail purchase. This warranty is not transferable to a subsequent purchaser. Profile Design's sole obligation under this warranty is to repair or replace the product, at Profile Design's option. Profile Design must be notified in writing of any claim under this warranty within 60 days of any claimed lack of conformity of the product.

#### Warranty Limitations

The duration of any implied warranty or condition, of merchantability, fitness for a particular purpose, or otherwise, on this product shall be limited to the duration of the express warranty set forth above. In no event shall Profile Design be liable for any loss, inconvenience or damage, whether direct, incidental, consequential or otherwise, resulting from breach of any express or implied warranty or condition, of merchantability, fitness for a particular purpose, or otherwise with respect to this product, except as set forth herein. Some states or countries do not allow limitation on how long an implied warranty lasts and some do not allow exclusions or limitations of incidental or consequential damages, so the above limitations or exclusions may not apply to you. This warranty gives you specific legal rights, and you may also have other rights, which may vary, from location to location. This warranty will be interpreted pursuant to the laws of the United States. The original English language version/meaning of this warranty controls over all translations and Profile Design is not responsible for any errors in translation of this warranty or any product instructions. This warranty is not intended to confer any additional legal, jurisdictional or warranty rights to you other than those set forth herein or required by law.

If any portion of this warranty is held to be invalid or unenforceable for any reason, such finding will not invalidate any other provision. For products purchased in countries other than the United States please contact Profile Design's authorized distributor in that respective country.

#### Warranty Service Options

To obtain service under this warranty you must either:

(1) Bring or send your Profile Design product, together with this warranty, the retail seller's original receipt or other satisfactory proof of the date of purchase to the retailer where you purchased the item or another authorized Profile Design retailer, or

(2) Send your Profile Design product (with the return authorization number on the outside of the shipping container and affixed to the product), together with the retail seller's original receipt or other satisfactory proof of the date of purchase to Profile Design 2677 El Presidio St. Long Beach, CA 90810 USA. You must first obtain a return authorization number by calling Profile Design at (310) 884-7756 ext. 161 (or send an email to [warranty@profile-design.com](mailto:warranty@profile-design.com)) prior to returning the product to Profile Design.

Profile Design may require that you complete and sign a warranty replacement request form before processing your warranty claim.

Any postage, insurance or other shipping costs incurred in sending your Profile Design product for service under either option above is your responsibility. Profile Design will not be responsible for products lost or damaged in shipping.

For products purchased in countries other than the United States please contact Profile Design's authorized distributor in the country where the product was purchased. They can be found on our website at [www.profile-design.com](http://www.profile-design.com)

#### Crash Replacement Policy

Profile Design understands that crashes can happen. As a result Profile Design will attempt to ease the pain by offering you a replacement product for 30% below Profile Design's current suggested retail price in your respective country. All other provisions of this warranty apply and the procedures outlined for warranty service apply also to the crash replacement policy. Profile Design will make the final decision on whether the part will be covered under the crash replacement policy.

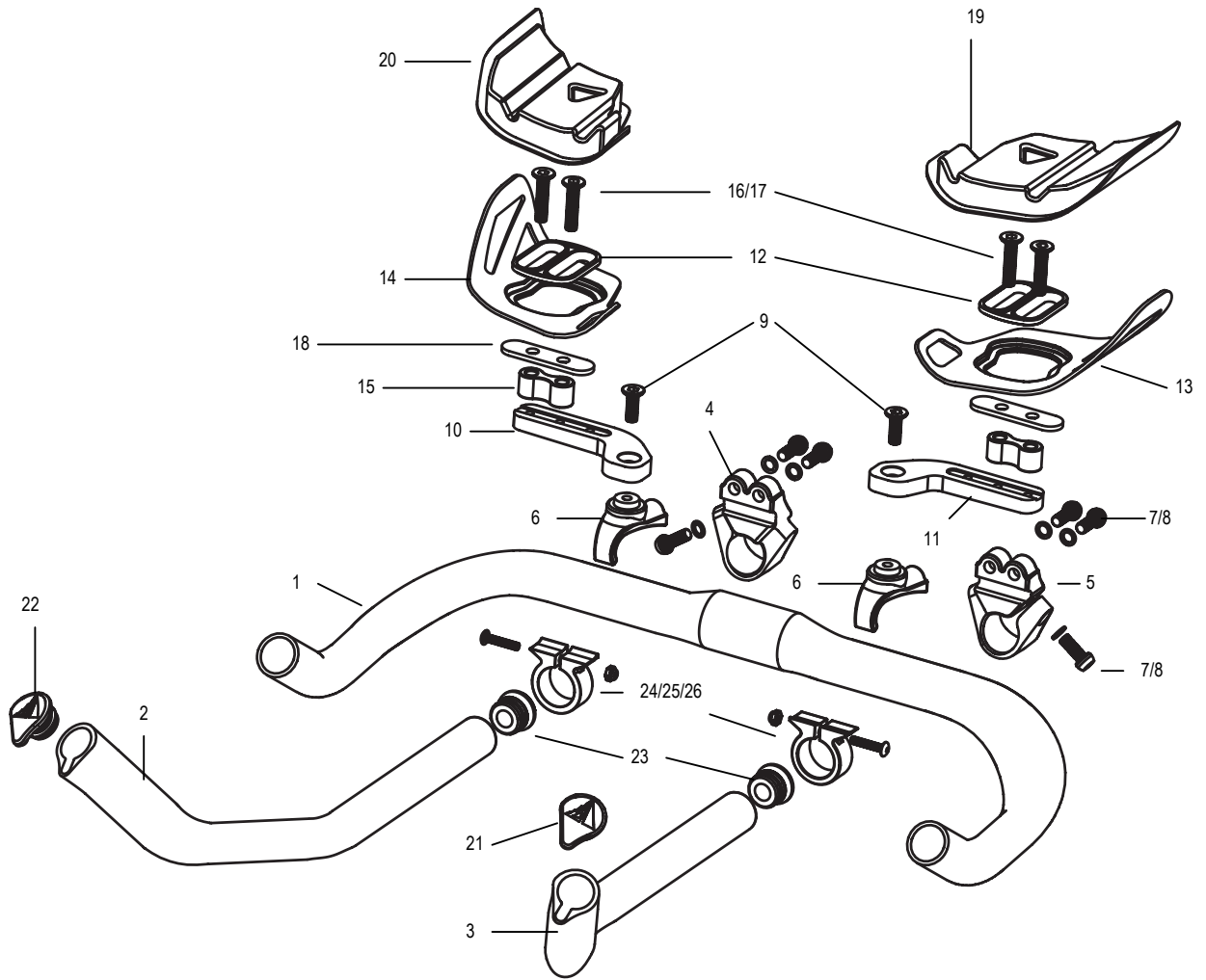
#### Warranty Exclusions

Retailers and sellers of Profile Design products are not authorized to modify this warranty in any way. It is your responsibility to regularly examine the product to determine the need for normal service or replacement. This warranty does not cover the following:

- Products that have been modified, neglected or poorly maintained, used for commercial purposes, misused or abused or involved in accidents.
- Damage occurring during shipment of the products (such claims must be presented directly to the shipper).
- Damage to products resulting from improper assembly or repair, the use or installation of parts or accessories not compatible with the original intended use of the product, or the failure to follow the product warnings and usage instructions.
- Damage or deterioration to the surface finish, aesthetics or appearance of the product.
- The labor required to remove and/or re-fit and re-adjust the item covered by this warranty.
- Normal wear to the product.
- Any products for which the consumer does not follow the warranty procedures outlined above.

For the current version of this warranty please visit our website at [www.profile-design.com](http://www.profile-design.com)

(© June 2003 Profile Design)



## PARTS LIST - Alumin X

Qty.	Part #	Ref.#	Part Description	Qty.	Part #	Ref.#	Part Description
1	-----	1	Bar-Alumin X 40-42-44cm	1	200003	14	Arm Trough F-22 Right
1	784537	2	Aerobar-Carbon Ergonomic Right	2	276667	15	Post-M6 Riser (Composite)
1	784538	3	Aerobar-Carbon Ergonomic Left	4	313628	16	Bolt-M6x28 Flat Head Black
1	104262	4	Bracket-Adjustable Forged Aerobar Right	4	313616	17	Bolt-M6x16 Flat Head Black
1	104263	5	Bracket-Adjustable Forged Aerobar Left	2	275557	18	Adaptor Plate F-22
2	104264	6	Clamp-Forged Aerobar	1	685166	19	Pad- F-22 w/Velcro Left
6	312615	7	Bolt-M6x15 Mushroom Cap Black	1	685167	20	Pad- F-22 w/Velcro Right
6	550006	8	Washer-M6X9X0.8 SS	1	168430	21	End Plug-Aerobar Carbon Ergo. Left
2	313618	9	Bolt-M6x18 Flat Head Cap Black	1	168431	22	End Plug-Aerobar Carbon Ergo. Right
1	104260	10	Bridge-Arm Adjustable Right	2	NN912	23	End Plugs-Logo
1	104261	11	Bridge-Arm Adjustable Left	2	104267	24	Plastic clamp
2	275556	12	Washer-M6 Arm Trough F-22	2	313420	25	Bolt-M4x20 Button Head Black
1	200002	13	Arm Trough F-22 Left	2	313403	26	Nut-M4 Black